

**CERTIFIED LAND CORNER RECORDATION**

DESCRIPTION OF CORNER EVIDENCE FOUND, AND ORIGINAL RECORD (If known)

LOCATION  
 S.15 S.14  
 S.22 S.23  
 T.12N., R.60W.  
 6th P.M.

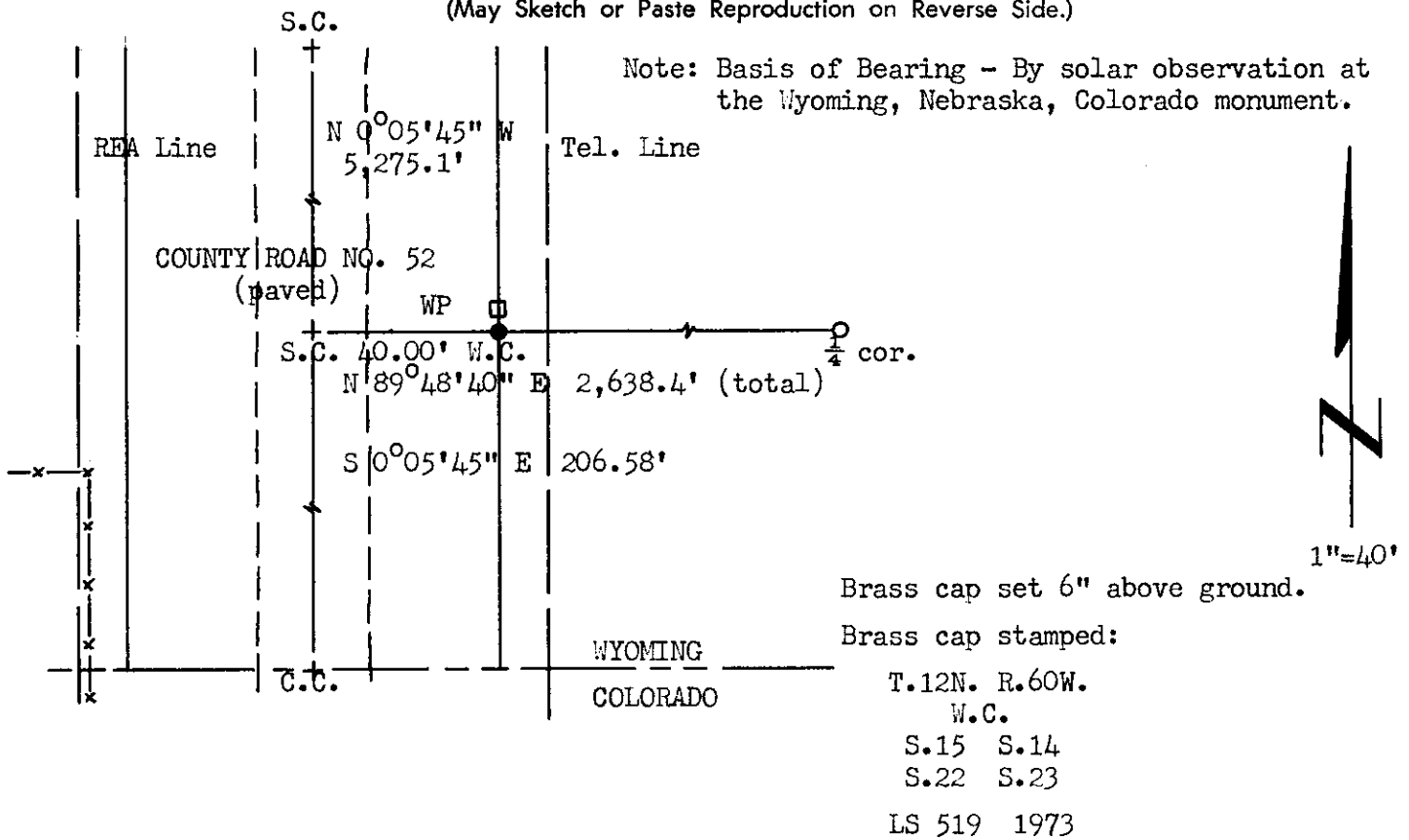
Corner re-established by G.L.O. distance from the C.C. to Secs. 22 & 23.  
 G.L.O. record - Sand Stone 17 x 12 x 5 13 in deep (with notches).  
 (South, 3.13 chains to C.C.)  
 (1874)

DESCRIPTION OF MONUMENT AND ACCESSORIES ESTABLISHED TO PERPETUATE THE ORIGINAL LOCATION OF THIS CORNER:

At the corner: No monument set.

Accessories: Set a 1½" dia. x 30" long iron pipe with brass cap, as Witness Corner, from which the S.C. bears S 89°48'40" W, 40.00 feet distant.  
 4" x 4" x 4" Redwood Post with aluminum sign set 1.5' N of W.C.

SKETCH, WITH COURSE AND DISTANCE TO ADJACENT CORNER IF DETERMINED IN THIS SURVEY.  
 (May Sketch or Paste Reproduction on Reverse Side.)



I, R.L. Hudson certify that I have carefully performed ~~or reviewed~~ the work done on the diagrammed corner as reported on this recordation form and approve the same.

R.L. Hudson Wyoming L.S. No. 519  
 Signature of Surveyor Registration No.

STATE OF WYOMING,  
 Office of Clerk and Recorder,  
 County of Saramie

This "corner record" was filed for record on the 22nd day of March, 1973, was noted on the cross-index plat and is assigned page No. 12-60, in book No. ONE.

Joley B. Williams  
 County Official

Cross Index No. _____	T. _____	R. _____	Mer. _____
_____	T. _____	R. _____	Mer. _____
_____	T. _____	R. _____	Mer. _____
_____	T. _____	R. _____	Mer. _____
_____	T. _____	R. _____	Mer. _____
_____	T. _____	R. _____	Mer. _____
_____	T. _____	R. _____	Mer. _____

Photographed.....

Indexed.....

Posted.....

The State of Wyoming }  
County of Laramie } SS

This instrument was filed for record  
at 11:22 o'clock P. M. on the  
22nd day of March  
A. D. 19 23 and duly recorded in  
Book ..... on page .....

*John W. ...*

County Clerk & Ex-Officio Register of Deeds  
By ..... Deputy